

OS-PTZ-I2IN4-AWSTM | 2MP 4x IR PTZ Network



- 1/2.7" 2Megapixel CMOS
- Powerful 4x optical zoom
- Support Triple-streams encoding
- WDR, Day/Night(ICR), Ultra DNR
- Max. 25/30fps@1080P, 25/30/50/60fps@720P
- IVS
- Support Wifi
- IR distance up to 30m



System Overview

Featuring with powerful optical zoom and accurate pan/tilt/zoom performance, the OS-PTZ-I2IN4-AWSTM camera can provide large monitoring range and great detail. The camera delivers 1080P resolution at 25/30 fps, with 4x optical zoom. The OS-PTZ-I2IN4-AWSTM is equipped with quick and smooth control, high quality image and good protection, which makes it can meet most of the requirements of video surveillance applications.

Functions

Wide Dynamic Range

Embedded with industry leading wide dynamic range (WDR) technology, vivid pictures are achieved even in the most intense contrast lighting conditions. For applications with both bright and low lighting conditions that change quickly, True WDR(120dB) optimizes both the bright and dark areas of a scene at the same time to provide usable video.

Smart H.264+

Delivering high quality video without straining the network, Smart H.264+ is the optimized implementation of H.264. The Smart H.264+ encoding platform includes a scene adaptive encoding strategy, dynamic GOP, dynamic ROI, flexible multi-frame reference structure and intelligent noise reduction, providing a savings of up to 70% of bandwidth and storage when compared with standard H.264.

Environmental

With a temperature range of -30 °C to +60 °C (-22 °F to +140 °F), the camera is designed for extreme temperature environments.

Interoperability

The camera conforms to the ONVIF (Open Network Video Interface Forum) and PSIA (Physical Security Interoperability Alliance) specifications, ensuring interoperability between network video products regardless of manufacturer.

Technical Specifications

Camera				
Image Sensor	1/2.7" CMOS			
Effective Pixels	1920(H) x 1080(V), 2 Megapixels			
RAM/ROM	256M/128M			
Scanning System	Progressive			
Electronic Shutter Speed	1/1s~1/300,000s			
Minimum Illumination	Color: 0.05Lux@F1.6; 0Lux@F1.6 (IR on)			
S/N Ratio	More than 50dB			
IR Distance	Distance up to 30m (98ft)			
IR On/Off Control	Auto / Manual			
IR LEDs	4			
Lens				
Focal Length	2.7mm~11mm			
Max. Aperture	F1.6 ~ F2.8			
Angle of View	H: 112.5° ~ 30°			
Optical Zoom	4x			
Focus Control	Auto/Manual			
Close Focus Distance	100mm~ 1000mm			
DORI Distance*	Detect	Observe	Recognize	Identify
	120m	48m	24m	12m
Pan/Tilt/Rotation				
Pan/Tilt/Rotation	Pan: 0° ~ 360° limited Tilt: 0° ~ 90°			
Manual Control Speed	Pan: 0.1° ~100° /s Tilt: 0.1° ~60° /s			
Preset Speed	Pan: 100° /s; Tilt: 60° /s			
Presets	300			
PTZ Mode	5 Pattern, 8 Tour, Auto Pan ,Auto Scan			
Speed Setup	Human-oriented focal Length/ speed adaptation			
Power up Action	Auto restore to previous PTZ and lens status after power failure			
Idle Motion	Activate Preset/ Scan/ Tour/ Pattern if there is no command in the specified period			
Protocol	DH-SD			
Intelligence				
Auto Tracking	N/A			
IVS	Tripwire, Intrusion,Abandoned/Missing, Face Detection			

* Note: The DORI distance is a "general proximity" of distance which makes it easy to pinpoint the right camera for your needs. The DORI distance is calculated based on sensor specification and lab test result according to EN 62676-4 which defines the criteria for Detect, Observe, Recognize and Identify respectively

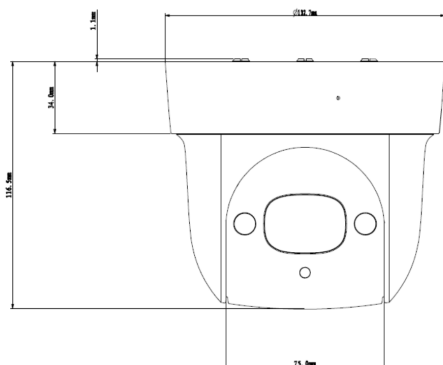
Video	
Compression	H.264+/H.264 / MJPEG
Streaming Capability	3 Streams
Resolution	1080P(1920×1080)/720P(1280×720)/D1(704×576/704×480)/CIF(352×288/352×240)
Frame Rate	Main Stream: 1080P/D1(1 ~ 25/30fps), 720P(1~50/60fps) Sub Stream1: D1/CIF(1 ~ 25/30fps) Sub Stream2: 720P/D1/ CIF (1 ~ 25/30fps)
Bit Rate Control	CBR/VBR
Bit Rate	H.264+/H.264: 448K ~ 8192Kbps, MJPEG: 5120K ~ 10240Kbps
Day/Night	Auto(ICR) / Color / B/W
Backlight Compensation	BLC / HLC / WDR (120dB)
White Balance	Auto,ATW,Indoor,Outdoor,Manual
Gain Control	Auto/Manual
Noise Reduction	Ultra DNR (2D/3D)
Motion Detection	Support
Region of Interest	Support
Electronic Image Stabilization (EIS)	N/A
Defog	Support
Digital Zoom	16x
Flip	180°
Privacy Masking	Up to 24 areas
Audio	
Compression	G.711a/G.711u(32kbps)/PCM(128kbps)
Network	
Ethernet	RJ-45 (10/100Base-T)
Wi-Fi	Support
Protocol	IPv4/IPv6,HTTP,HTTPS,SSL,TCP/IP,UDP,UPnP, ICMP,IGMP,SNMP,RTSP,RTP,SMTP, NTP,DHCP, DNS,PPPOE,D-DNS,FTP, IP Filter,QoS,Bonjour,802.1x
Interoperability	ONVIF, PSIA, CGI
Streaming Method	Unicast / Multicast
Max. User Access	20 users

OS-PTZ-I2IN4-AWSTM | 2MP 4x IR PTZ Network

Technical Specifications

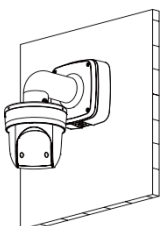
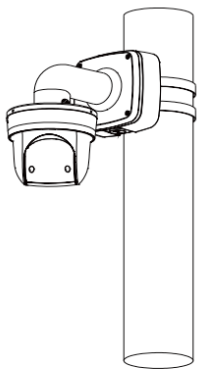
Edge Storage	NAS (Network Attached Storage), Local PC for instant recording, Micro SD card 128GB
Web Viewer	IE, Chrome, Firefox, Safari
Management Software	Smart PSS, DSS
Smart Phone	IOS, Android
Certifications	
Certifications	CE: EN55032/EN55024/EN50130-4 FCC: Part15 subpartB, ANSI C63.4-2014 UL: UL60950-1+CAN/CSA C22.2, -No.60950-1
Interface	
Video Interface	N/A
Audio Interface	Built-in Mic
RS485	N/A
Alarm	N/A
Electrical	
Power Supply	DC 12V/1.5A
Power Consumption	10W, 13W (IR on)
Environmental	
Operating Conditions	30°C ~ 60°C (-22°F ~ +140°F) / Less than 90% RH
Ingress Protection	N/A
Vandal Resistance	N/A
Construction	
Casing	Metal
Dimensions	132.7 (mm) x 116.5 (mm)
Net Weight	0.95kg(2.09lb)
Gross Weight	1kg(2.20lb)

Dimensions



Accessories (optional)

Wall Mount: OS-PFB302S	Mount Adapter: OS-PFA103	Power Supply: DC12V/2A
		
Pole Mount: OS-PFA150	Ceiling Mount: OS-PFB300C	Corner Mount: OS-PFA151
		

Wall Mount: OS-PFA103 + OS-PFB302S	Pole Mount: OS-PFA103 + OS-PFB302S + OS-PFA150
	
Ceiling Mount: OS-PFA103 + OS-PFB300C	
